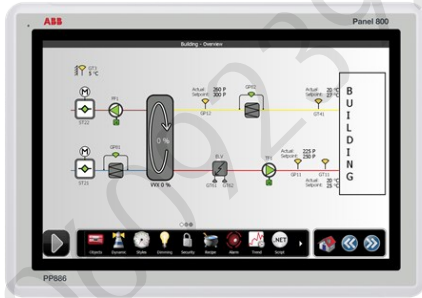


PP886

Compact Product Suite hardware selector



Touchscreen panels with brilliant TFT/LED display colors and multi-protocol connectivity. The standard range of Panel 800 comprises of PP875, PP881, PP883, PP886 and PP895 which are easy-to-use HMI with comprehensive and integrated templates and libraries for every conceivable process you need. All standard panels are equipped with high-resolution graphics in TFT/LED display. Most models offer wide screens and high-resolution displays for increased efficiency and excellent operator interaction.

Features and benefits

- Easy to use**
 A fully deployable HMI with comprehensive and integrated templates and libraries for every conceivable process. The Panel Builder tool, with a familiar Microsoft® Windows® environment along with multiple language support results in quick, easy, and efficient engineering.
- State-of-the-art graphics**
 Vector-based, high-resolution graphics in TFL/LED display, with the icon-based interface, navigation and control.
- Robust and reliable**
 Panel 800 is constructed in a strong yet lightweight diecast, powder-coated aluminum housing. Front casing withstands wet, dusty and demanding environments. Operating temperatures range between -10° C to + 60° C with maximum 85% humidity.
- Truly open platform**
 Built on open architecture and technologies that accompany the .NET framework, these panels are capable of multi-brand controller connectivity. A multitude of connection options are available for local communication, expansion, remote access and more.
- Try your application before you use it**
 Nice possibility to simulate and run the application directly from the Panel Builder 800 before you use it.

General info

Article number	3BSE092980R1
Category	Standard
Display type	Touch
Display size	15.4"
Brightness	450 cd/m ²
Display resolution, ratio	1280 x 800 (16:10)
Processor	ARM9 (1 GHz)
Main memory	1 GB
External storage media	2 GB SSD, 1.5 GB free for application storage
Dimension WxHxD (mm)	410 x 286 x 61 mm
Power supply	24 V DC (18 to 32 VDC)
Operating temperature	-10 °C to +60 °C

Detailed data

Dimming	Yes
Interaction type	Resistive touch
Realtime clock	Yes
Ethernet (shielded RJ 45)	2 x 10/100 Base-T
USB	2 x USB 2.0, 500 mA
Serial port	1 x RS232, 1 x RS422/485, 1 x RS485 (only if COM 2 is RS485)

Environment and certification

Frame material, front foil	White powder-coated aluminum
Power consumption	31.2 W
Protection (front/rear)	Front IP65, NEMA 4X/12 and UL Type 4X/12. Rear IP20
Relative operating humidity	5 % – 85 % non-condensed
Storage temperature	-20 °C to +70 °C
Vibration and shock	1 G / 15 G
CE-marking	CE, FCC, KCC
UL	UL 61010-2-201
Marine	DNV, KR, GL, LR, ABS, CCS
Hazardous	No
RoHS compliance	DIRECTIVE/2011/65/EU
WEEE compliance	DIRECTIVE/2012/19/EU

Dimensions

Weight	3.85 kg
Dimension W×H×D (mm)	410 x 286 x 61 mm
Cut-out dimension W×H (mm)	394 x 270 mm
Mounting depth mm. (Including clearance)	53 (153) mm
Mounting	Panel Mount, VESA 75 x 75

18060923929
18060923929
18060923929

